

# HOUSE AND LAND PACKAGE



## Fairview

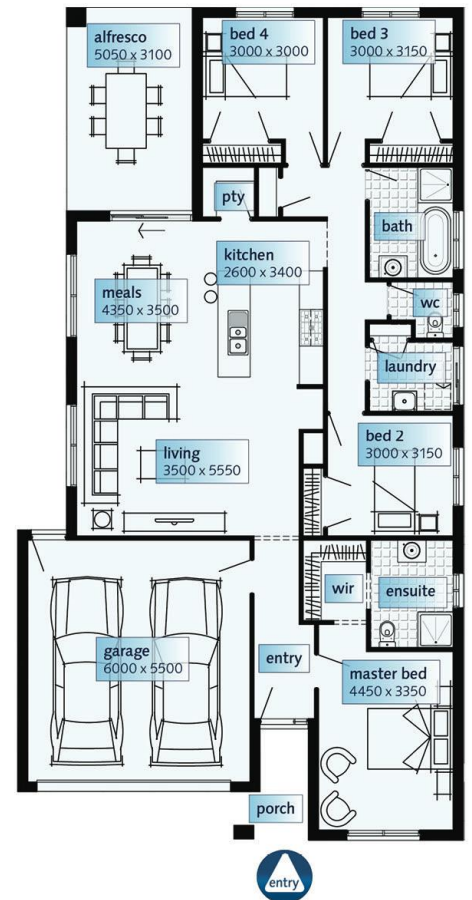
Alexandria Facade Option



From **\$451,200**

**Lot 4 Highbury Road, Clyde North (400m<sup>2</sup>)**  
**Thompsons Run Estate \*Based on land price \$247,900**

- ✓ Various façade options available
- ✓ 900mm stainless steel appliances included
- ✓ Gas ducted heating
- ✓ Solar hot water service
- ✓ Wide range of internal and external finishes
- ✓ Colour through concrete driveway and path
- ✓ Keyed locks to all windows
- ✓ Fixed site cost and fixed local government OH&S
- ✓ Brickwork above all windows
- ✓ Remote control garage door
- ✓ Tiles, carpet, timber or laminate floor



FAIRVIEW		
Dimensions	SQ.M	Squares
Ground Floor	149.26m <sup>2</sup>	16.07Sqs
Porch	4.05m <sup>2</sup>	0.44Sqs
Garage	36.55m <sup>2</sup>	3.93Sqs
Total area	205.58m <sup>2</sup>	22.13Sqs
Width 11.04m		
Depth 20.63m		
Suggested minimum block width: 12.50m New Living range specification		

Please contact:

Name **Nada Janeski**  
 Number **0408 148 567**

1300 SIMONDS [simonds.com.au](http://simonds.com.au)

