

# HOUSE AND LAND PACKAGE



Brooklyn

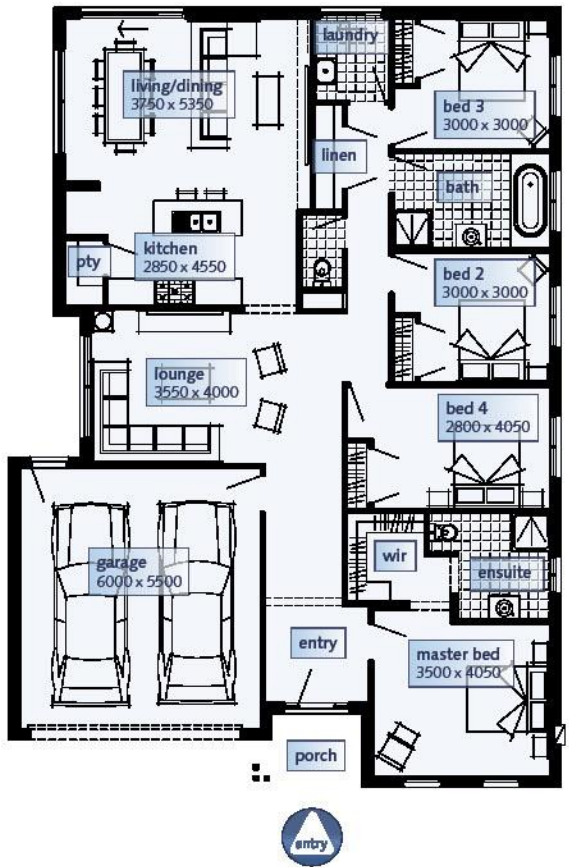
Berkley Facade Option



From **\$472,900**

Lot 5 Highbury Road, Clyde North (448m<sup>2</sup>)  
 Thompsons Run Estate \*Based on land price \$269,900

- ✓ Various façade options available
- ✓ 900mm stainless steel appliances included
- ✓ Gas ducted heating
- ✓ Solar hot water service
- ✓ Wide range of internal and external finishes
- ✓ Colour through concrete driveway and path
- ✓ Keyed locks to all windows
- ✓ Fixed site cost and fixed local government OH&S
- ✓ Brickwork above all windows
- ✓ Remote control garage door
- ✓ Tiles, carpet, timber or laminate floor



BROOKLYN		
Dimensions	SQ.M	Squares
Ground Floor	167.15m <sup>2</sup>	17.99Sqs
Porch	4.11m <sup>2</sup>	0.44Sqs
Garage	36.41m <sup>2</sup>	3.92Sqs
Total area	207.67m <sup>2</sup>	22.35Sqs
Width 12.60m		
Depth 17.87m		
Suggested minimum block width: 14.00m New Living range specification		

Please contact:

Name **Nada Janeski**  
 Number **0408 148 567**

1300 SIMONDS [simonds.com.au](http://simonds.com.au)



Images shown for illustrative purposes and may not represent the final product. Prices are based on availability and price of land. Simonds reserves the right to alter any price or substitute any home without prior notice. All house and land packages are subject to developers' final approval. In the event that a Homesite does not have Survey Pegs in place to identify lot boundary then a additional charge will be added to the cost of the house.