

**FIXED PRICE  
HOUSE & LAND  
PACKAGE**

- Simple streamlined process
- Smart, practical floorplans



FIRST HOME BUYER **\$357,351\***



**Urban 160**

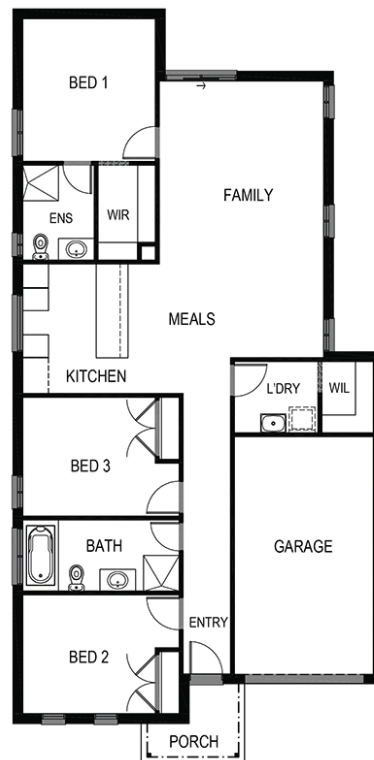
3 bedrooms 2 bathrooms 1 car 10.5m

*Simplicity  
range*

Lot: 25 Highbury Road, Clyde North  
Estate: Thompson Run  
Block size: 319m<sup>2</sup>  
Title Exp: Jan 2017  
House Size: 149.1sq

**Package Includes:**

- Carpet and Floor tiles throughout
- Stainless steel upright cooker and rangehood
- Colorbond® roof
- Choice of affordable add on packs to complete your home
- 4 interior designed internal colour schemes
- 6 interior designed external colour schemes
- Fixed Site Costs
- 6 star energy rating on BEST orientation
- Designs that are perfect for the first home buyer & investor



[www.fairhavenhomes.com.au](http://www.fairhavenhomes.com.au)

**Fairhaven Homes**  
t: 9704 4070  
e: [info@fairhavenhomes.com.au](mailto:info@fairhavenhomes.com.au)

**Fairhaven Head Office**  
12 Wheeler Street  
BERWICK, VIC 3806